

Appendix A

Oklahoma Waterbody Identification (WBID) System

Waterbody identification (WBID) numbers are established based on a waterbody's location in the State's Water Quality Management Plan. WBIDs are unique identifiers that offer a convenient, unambiguous method of referencing waterbodies within the State of Oklahoma. A complete WBID consists of a two-letter, fourteen-digit identifier.

Example: **OK311500030010_00** - Elk Creek in southwest Oklahoma

The first two characters define the state code as required by EPA.

“OK**..”**

The next six digits are derived from Oklahoma's Water Quality Management Planning Basins. The State's seven large, one-digit planning basins are broken down into smaller basins, each identified with a six-digit number.

“OK 311500**..”**



Figure 1. Six-Digit Planning Basins

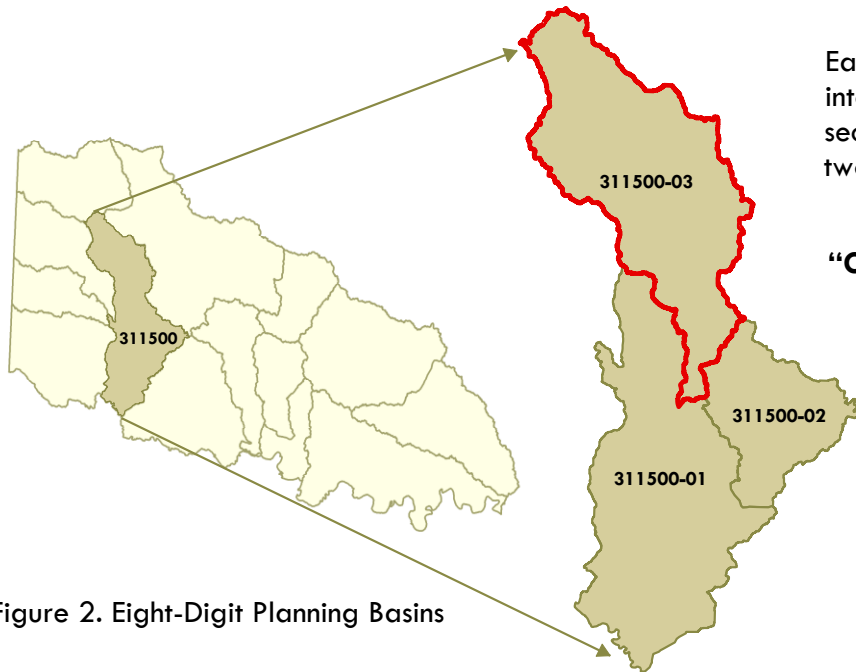


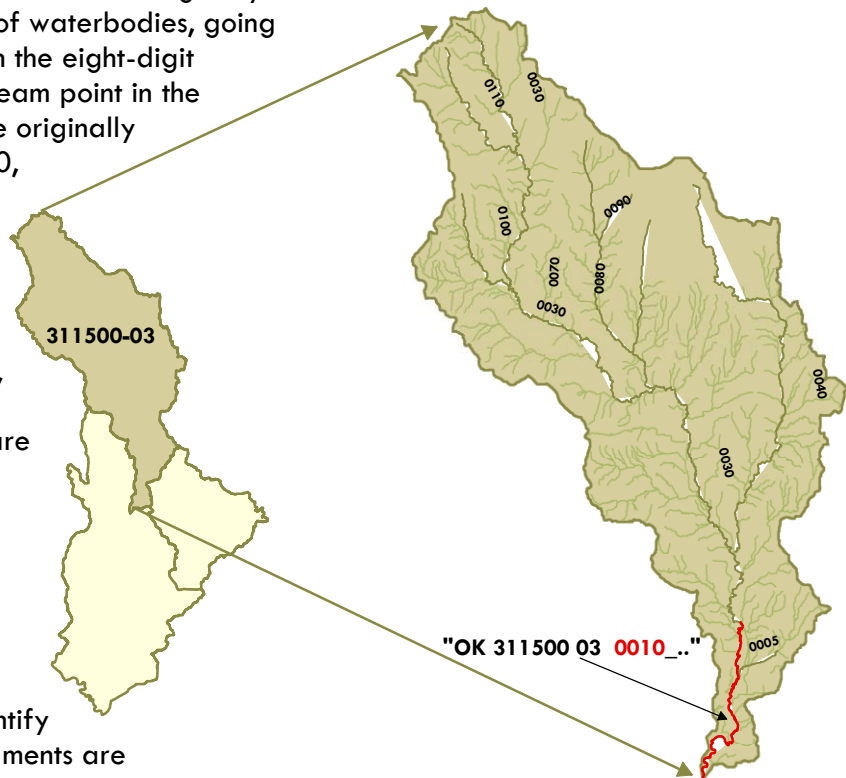
Figure 2. Eight-Digit Planning Basins

Each six-digit basin is divided into a number of smaller sections that are identified by a two-digit number (Figure 2).

“OK 311500 03_..”

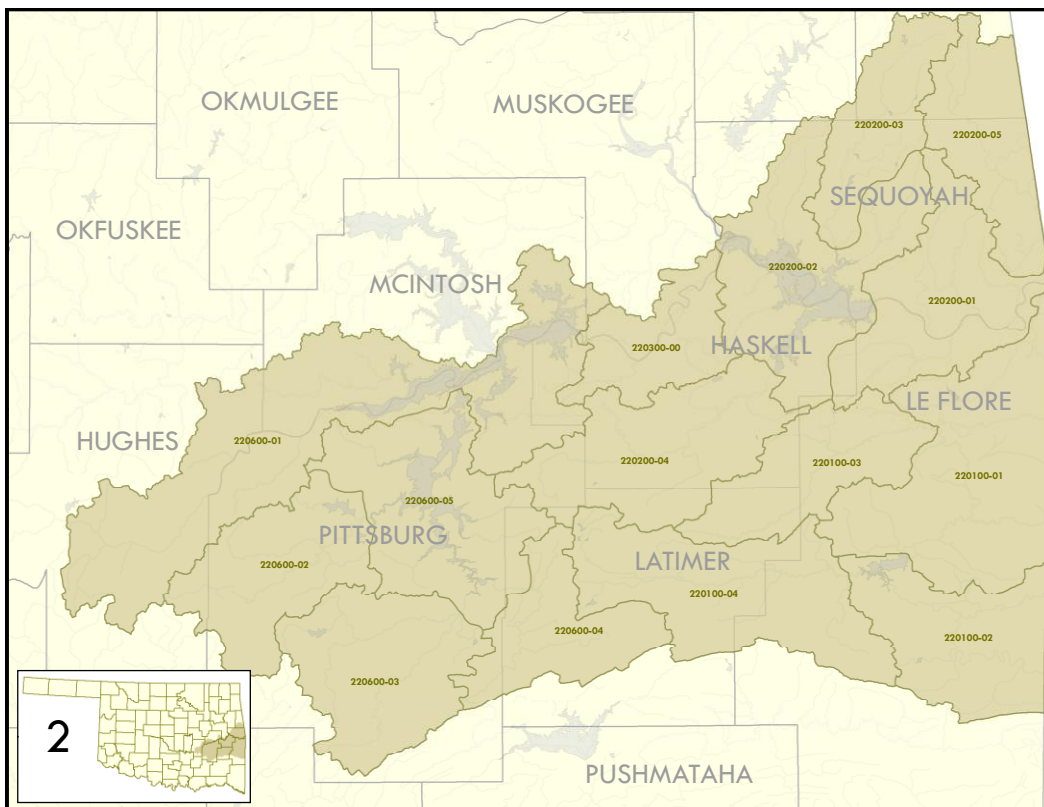
Figure 3. WBID Numbers

The next four digits of a WBID number were originally intended to represent a hydrologic sequence of waterbodies, going from the most downstream point in the eight-digit watershed up to the furthest upstream point in the watershed. These four digits were originally selected by tens (e.g., 0010, 0020, 0030). This provided for the addition of waterbodies while maintaining the hydrologic sequence as much as possible. Not all waterbodies have been assigned an identification number, primarily due to limited resources and need. As more waterbodies are assessed, the WBID system is designed to incorporate a unique identifier for these waterbodies (Figure 3).



The last two digits of a WBID number allow a waterbody to be segmented further in order to identify specific portions. Waterbody segments are identified by a segment ID made up of an underscore and two additional digits. Waterbodies are initially assigned a segment ID of _00. If additional segmentation is required, upstream segments receive a number higher in value (e.g., _10, _20, _30).

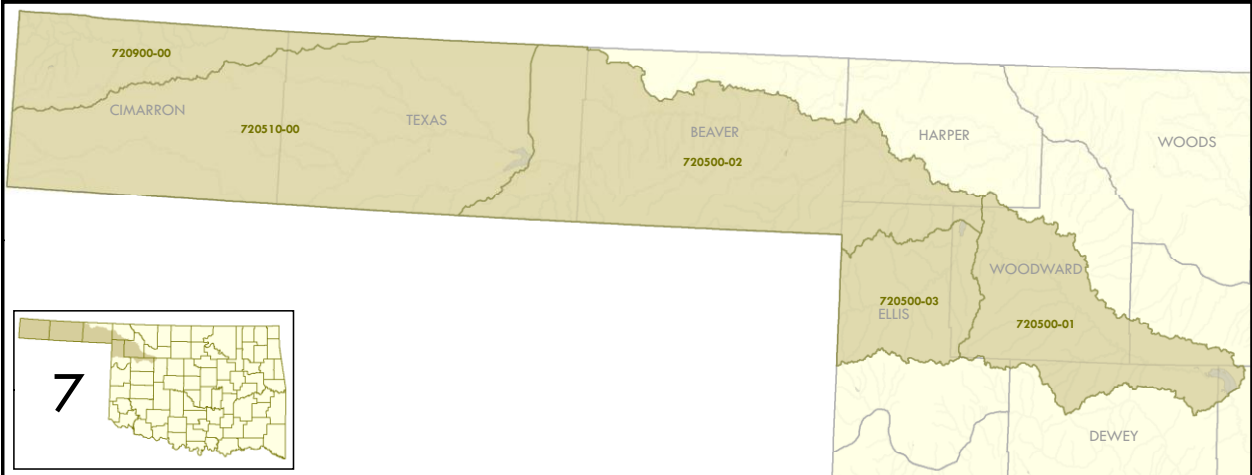
Elk Creek
“OK 311500 03 0010 _00”



Oklahoma 8-digit Planning Basins 1 and 2



Oklahoma 8-digit Planning Basins 3 and 4



Oklahoma 8-digit Planning Basins 5, 6, and 7

THIS PAGE INTENTIONALLY LEFT BLANK