



Clean Harbors Lone Mountain, LLC
40355 S. County Road 236
Waynoka, OK 78360-6302
(580) 697-3500

RECEIVED

MAR 10 2025

LAND PROTECTION DIVISION
DEPT. OF ENVIRON. QLT

March 4, 2025

Ms. Hillary Young, P.E., Chief Engineer
Land Protection Division
Oklahoma Department of Environmental Quality
707 North Robinson
P.O. Box 1677
Oklahoma City, OK 73101-1677

Via: Electronic Transmission

**RE: Class 2 Permit Modification Request
Revise Base Grading Plan for Landfill Cell 15
Clean Harbors Lone Mountain, LLC
EPA ID No. OKD065438376**

Dear Ms. Young:

Pursuant to Oklahoma Administrative Code (OAC) 252:205-3-2 and 40 CFR 270.42(b), Clean Harbors Lone Mountain, LLC (CHLM or the "Facility") hereby requests a Class 2 Permit Modification to revise the base grading plan for Landfill Cell 15.

This Class 2 modification request proposes the following revisions to the grading plan:

- Addition of a "large termination berm" that will be situated on the interior of the landfill on the South side of Sub Cell 17, and
- Revision of base grades and subcell size (areas) of Subcells 17 and 18.

The modification would not change the total waste disposal footprint of Cell 15 or the final cover grading plan and final surface water management system design. Moreover, it would not otherwise affect the design components of Cell 15 or the design basis and supporting engineering analyses previously prepared to support the permitting of Cell 15. The modification would result in a minor reduction in disposal capacity.

Attached please find an Engineering Report and updated permit drawings prepared by Geosyntec Consultants in support of this modification request.

"I certify under penalty of law that this document and all attachments were prepared under my direction or supervision in accordance with a system designed to assure that qualified personnel properly gather and evaluate the information submitted. Based on my inquiry of the person or persons who manage the system, or those persons directly responsible for gathering the information, the information submitted is, to the best of my knowledge and belief, true, accurate,

"People and Technology Creating a Safer, Cleaner Environment"



and complete. I am aware that there are significant penalties for submitting false information, including the possibility of fine and imprisonment for knowing violations.”

If you have any questions regarding this matter, please feel free to contact either Environmental Compliance Manager Christine Sawyer at (580) 430-7219 or me at (580) 697-3500.

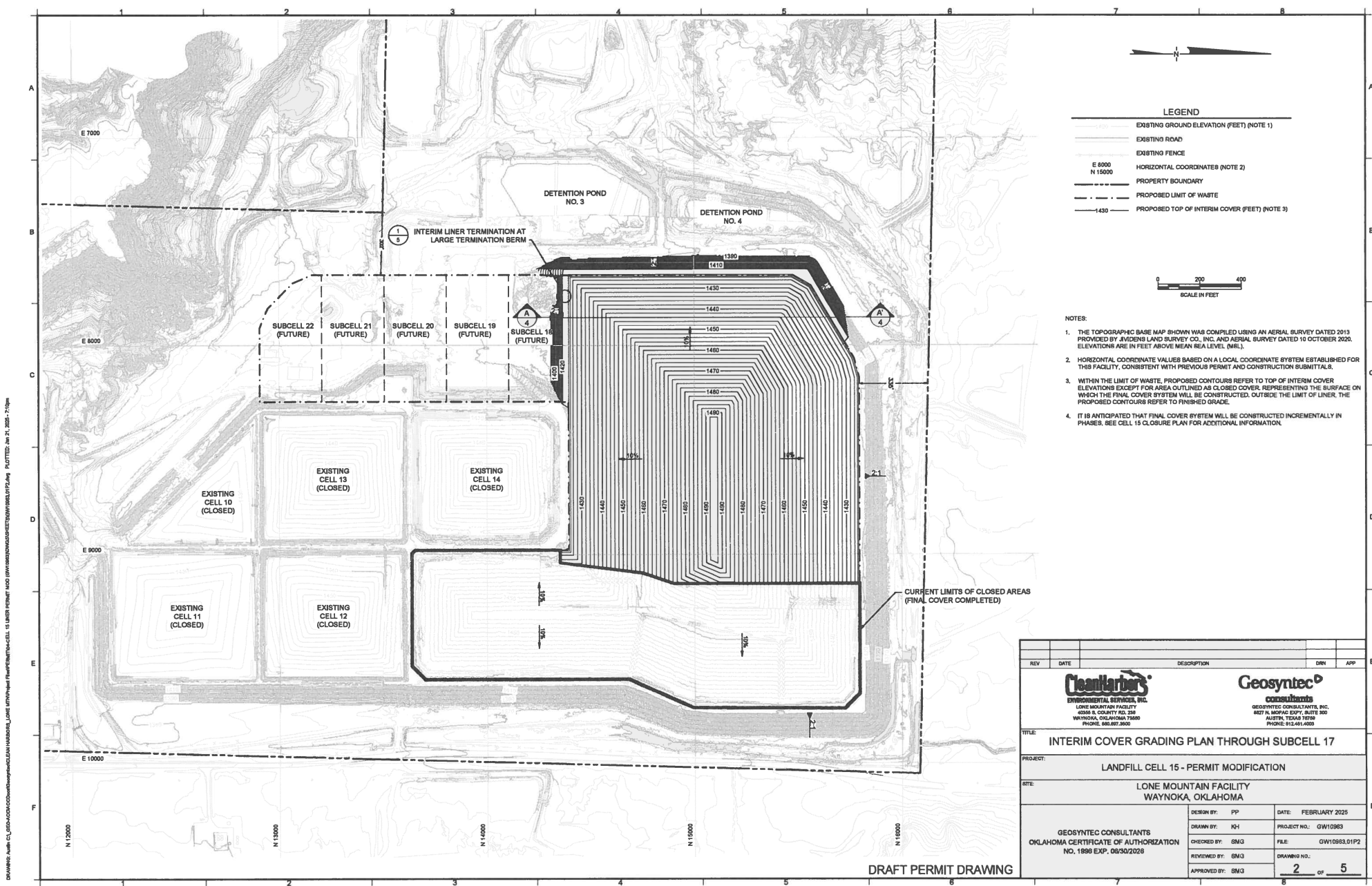
Sincerely,

A handwritten signature in black ink, appearing to read 'M. Meriwether', with a long horizontal flourish extending to the right.

Michael Meriwether
Facility General Manager
Clean Harbors Lone Mountain, LLC

Attachment: Engineering Report

CC: Brigette Haley, ODEQ
James Wilkins, ODEQ
Jared Torstenson, Clean Harbors
Christine Sawyer, Clean Harbors
Michael Crisenbery, Clean Harbors
Jay Adair, Clean Harbors
Faizur Khan, Clean Harbors
Scott Graves, Geosyntec Consultants



LEGEND

	EXISTING GROUND ELEVATION (FEET) (NOTE 1)
	EXISTING ROAD
	EXISTING FENCE
	HORIZONTAL COORDINATE (NOTE 2)
	PROPERTY BOUNDARY
	PROPOSED LIMIT OF WASTE
	PROPOSED TOP OF INTERIM COVER (FEET) (NOTE 3)

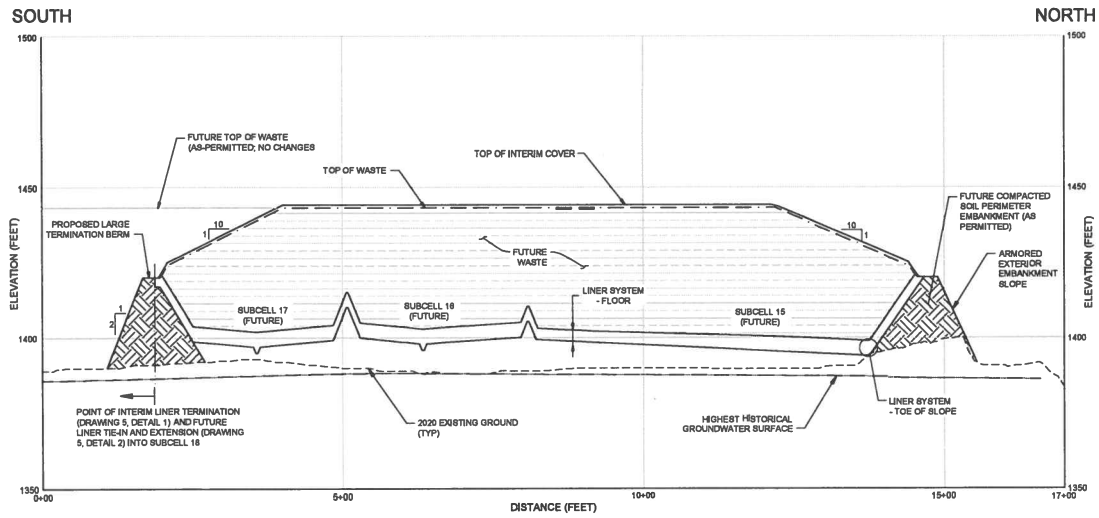


- NOTES:
1. THE TOPOGRAPHIC BASE MAP SHOWN WAS COMPILED USING AN AERIAL SURVEY DATED 2013 PROVIDED BY JENSEN LAND SURVEY CO., INC. AND AERIAL SURVEY DATED 10 OCTOBER 2020. ELEVATIONS ARE IN FEET ABOVE MEAN SEA LEVEL (MSL).
 2. HORIZONTAL COORDINATE VALUES BASED ON A LOCAL COORDINATE SYSTEM ESTABLISHED FOR THIS FACILITY, CONSISTENT WITH PREVIOUS PERMIT AND CONSTRUCTION SUBMITTALS.
 3. WITHIN THE LIMIT OF WASTE, PROPOSED CONTOURS REFER TO TOP OF INTERIM COVER ELEVATIONS EXCEPT FOR AREA OUTLINED AS CLOSED COVER, REPRESENTING THE SURFACE ON WHICH THE FINAL COVER SYSTEM WILL BE CONSTRUCTED. OUTSIDE THE LIMIT OF LINER, THE PROPOSED CONTOURS REFER TO FINISHED GRADE.
 4. IT IS ANTICIPATED THAT FINAL COVER SYSTEM WILL BE CONSTRUCTED INCREMENTALLY IN PHASES. SEE CELL 15 CLOSURE PLAN FOR ADDITIONAL INFORMATION.

REV	DATE	DESCRIPTION	DRN	APP
<p>Geosyntec CONSULTANTS <small>ENVIRONMENTAL SERVICES, INC. LONE MOUNTAIN FACILITY 4048 S. COUNTY RD. 238 WAYNOKA, OKLAHOMA 75080 PHONE: 800.857.3000</small></p> <p><small>GEOSYNTEC CONSULTANTS, INC. 8027 N. MOJAVE EXPY., SUITE 300 AUSTIN, TEXAS 78745 PHONE: 915.661.4000</small></p>				
<p>TITLE: INTERIM COVER GRADING PLAN THROUGH SUBCELL 17</p>				
<p>PROJECT: LANDFILL CELL 15 - PERMIT MODIFICATION</p>				
<p>SITE: LONE MOUNTAIN FACILITY WAYNOKA, OKLAHOMA</p>				
<p>DESIGN BY: PP</p>		<p>DATE: FEBRUARY 2025</p>		
<p>DRAWN BY: JH1</p>		<p>PROJECT NO.: GW110863</p>		
<p>CHECKED BY: SMG</p>		<p>FILE: GW110863.01P2</p>		
<p>REVIEWED BY: SMG</p>		<p>DRAWING NO.:</p>		
<p>APPROVED BY: SMG</p>		<p>2 OF 5</p>		
<p>GEOSYNTEC CONSULTANTS OKLAHOMA CERTIFICATE OF AUTHORIZATION NO. 1998 EXP. 05/30/2028</p>				

DRAFT PERMIT DRAWING

DRAWING: \\ms-cl_020-400-0000\p020-400-0000\CLEAN_HARBOR_LONE_MOUNTAIN_FACILITY\PERMIT_MOD\DWG\150893.DWG PLOTTED: Jan 27, 2025 7:10am



A
1 SECTION
 SOUTH-NORTH LANDFILL CROSS-SECTION



DRAFT PERMIT DRAWING

REV	DATE	DESCRIPTION	DRN	APP
<div style="display: flex; justify-content: space-around;"> <div style="text-align: center;"> CleanHarbor <small>ENVIRONMENTAL SERVICES, INC.</small> <small>LONE MOUNTAIN FACILITY</small> <small>6206 S. COUNTY RD. 238</small> <small>WAYNOKA, OKLAHOMA 78090</small> <small>PHONE: 817.997.3500</small> </div> <div style="text-align: center;"> Geosyntec <small>CONSULTANTS</small> <small>GEOSYNTEC CONSULTANTS, INC.</small> <small>887 A. MORGAN SQ., SUITE 300</small> <small>AUSTIN, TEXAS 78788</small> <small>PHONE: 512.481.4000</small> </div> </div>				
TITLE: LANDFILL CROSS-SECTION A				
PROJECT: LANDFILL CELL 15 - PERMIT MODIFICATION				
SITE: LONE MOUNTAIN FACILITY WAYNOKA, OKLAHOMA				
		DESIGN BY: PP	DATE: FEBRUARY 2025	
		DRAWN BY: JQH	PROJECT NO.: GW10983	
		CHECKED BY: SMG	FILE: GW10983.01P4	
		REVIEWED BY: SMG	DRAWING NO.:	
		APPROVED BY: SMG	<div style="border: 1px solid black; padding: 2px; display: inline-block;"> 4 of 5 </div>	
GEOSYNTEC CONSULTANTS <small>OKLAHOMA CERTIFICATE OF AUTHORIZATION</small> <small>NO. 1996 EXP. 06/30/2028</small>				

